

2006 Patch returns after two years farming in California; we found the Farm Based Education Association with 7 other educational farms, including Shelburne Farms, in order to pass along lessons learned to a growing farm school movement; Minuteman National Park invites The Farm School to partner in farming their land in Concord and we propose an incubator farm for graduates from Maggie's; putting up fence in the Northwest Pasture with a group of kids is like being on our own private beach: beautiful, tranquil and cosmic—the only difference is the great sense of purpose we all feel.

2007 Patch becomes Director; Jennifer becomes program director at Maggie's with Carlen remaining to continue mentoring all and Suzanna kindly steps in to lead the programs for children while Reid heads off to Harvard; 10 students join the program at Maggie's for the year; Sentinel Elm Farm purchased with a gift from Scott and Christy Hill in honor of Dick and Susan Grimm; Holstein calves Sal and Dean come to the farm to start their training as oxen with every group that comes; led by Carlen, a 300-foot line of sixth graders, farm school farmers and students from the Practical Farm Training Program broadcast winter rye seed by hand in field recently harvested of more than 4,000 pounds of pumpkins; looking down the list of over 40 graduates from the Practical Farm Training Program to date, over 80% are in a profession/school setting that is directly related to their training at Maggie's: Jamie growing for a 500 member CSA, Kelly on the management team at the Greenmarket organization in NYC, Adrian teaching the children who visit Red Gate Farm, Laura starting a CSA outside Philadelphia, Rachel on the farm at Northfield Mt. Hermon School, David at UVA studying agriculture; Bradley, Keith and the students at the Program for Visiting Schools mow the Northwest pasture with scythes and put the hay up loose in the mow; Pete Merrill has a successful year filled with beautiful veggies and escaping sheep as the pioneer Maggie's graduate farming at Minuteman; Bobby plays for the school for a third time at the annual Big Pig Gig, our beautiful community contributing \$240,000 at the event. **Number of annual donors: 200 (only a representative few of whom are mentioned here but all of whom are a vital part of the story) Cumulative number of students served: 16,000**

2008 In this, our 20th year, Maggie's husband Bob dies and is dearly missed by all for his humor and kindness; Reid returns; **Maggie does us the honor of selling us her beloved farm, the purchase of which is made possible by the generosity of Dick and Denise Bergmann;** after 2 years as a CIT, Eliza joins the staff at summer camp; Mavis Staples lifts us up at the 6th Annual Big Pig Gig; 13 years after we bought our first John Deere we buy another, much needed for the expanded field-crop operation; thanks to a gift from the Wendling Foundation, we break ground on a new, commercial-sized greenhouse; Ben is back in the barn, milking cows with kids; dry bean pods ready for shelling fill a tarp in the middle of a farewell circle: once again, many hands join together, an overwhelming task becomes joyful and the magic expands ever outward. **Annual budget: \$1,150,000 Donations: \$600,000 Tuition/farm revenue: \$550,000 Number of CSA members: 130**

2009 Spring will bring our 20th anniversary—plan to **CELEBRATE!**

BOARD OF DIRECTORS (past & current*) John Perry Barlow, Steve Davenport, Wendy Davenport*, Marjorie Gatchell, Sarah Holmes, Ben Holmes*, Steve Kromer, Wm Levine, Todd Nelson, Perry Nye, Ted Scott, Amy Waldman, Bob Weir, Louise Weed, Peter Agoos*, Nora Huvell*, Doug Curtis*, Sam Southworth, Jay Stone, Tyler Stevens. Ayla Gavins*, Gino Bernat*, Jonathan Bush*, George Travis*, Scott Hill*, Ann Childs Collins, Jen Tobin, Molly Schmitt*, Shandor Garrison*, John Peterman, Sharmy Altshuler*, Julie Choe*, Chuck Weed*, Ellen Kurz*, Suzanna Johannet*

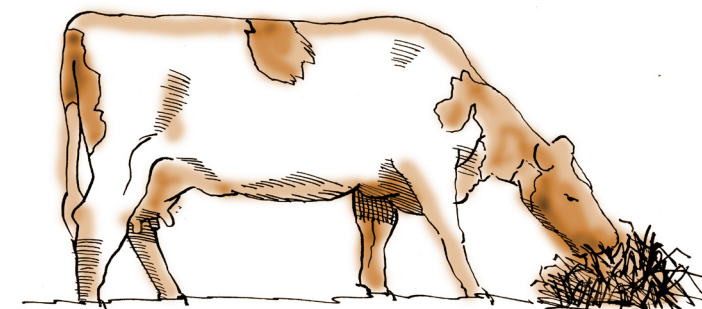
STAFF (past & current*) Ben Holmes*, Ben Utter, Will Anderson, Carlen Rigrod*, Doug Smith, Josh Buell, Molly Schmitt, Kate Lewis, Erik Reimanis, Abby Lerner, Paul Wanta, David Hull, Pam Kimball, Kate Callaghan, Danielle Holland, Brett Ahlstrom, Shandor Garrison, Nat Torrens, Maria Fellows, Obadiah Buell, Erica Vanetten, Charles Weed, Louise Weed, Chris Pullin, John Lawson, Tracy Manning, Meg Coward, Julie Choe, Heather Heyes, Sylvia Houghteling, Rachel Lord, Noah Perlman, Roy Nilson, Bradley Teeter*, Reid Bryant*, Oona Coy, Theresa Heary*, Chris Kurth, Kat Lippy-Jones, Genny-Wren Miller, Kim Bryant, Gale Munson*, Sarabelle Eisenfeld, Rafe Halsy, Jennifer Core*, Patrick Connors*, Brooke Coleman*, Chad Mills, April Kocis*, Charlie Utter, Papis Traore, Kyla Allon*, Suzanna Bancroft*, Keith Caton*, Sara Ellison*, Nate Frigard*, Josh Pincus*, Wendy Davenport*, Jennifer Smith*, Charlotte Sullivan*, Olivier Flagolet*, Charles Gill*

SCHOOLS Advent, Atrium, Beaver Country Day, Belmont Day, Brookwood, Brookline Vermont, Cambridgeport, Charles River, Chestnut Hill, Community Prep, Dedham Country Day, Driscoll, Ecole Bilingue, Edward Everett, Fayerweather, Fenway Middle College High School, Framingham Charter, Gordon, Hamilton, Highlander, Lexington Waldorf, Maple Dean, Milton, Mission Hill, Monadnock Waldorf, Metro West, Newton Country Day, Orchard Garden, Phoenix, Pierce, Pine Hill Waldorf, Rutgers Prep, Shackleton, Shady Hill, State College Friends, Ten Acre, Touchstone, Tower, Village, Wheeler, Winsor, Zenelli Springfield, Cambridge Friends, Farmington Valley Academy Montessori, Nativity Prep, McAuliffe Regional Charter, Los Amigos, Leslie Ellis, Cape Cod Waldorf

THE FARM SCHOOL is a non-profit educational farm situated on 300 acres in Athol, Massachusetts. The Farm School now offers three programs: *The Program for Visiting Schools (PVS)*, a three day program for middle-school students and their teachers throughout the school year and a camp in summer; *the Chicken Coop (CC)*, a full-time middle school for local children; and *the Practical Farm Training Program (PFTP)*, a year-long immersion program for adults. *The work and care of the farm in the dairy and fields, in the garden and in the forest, is the mainstay of the programs. The Farm School does not discriminate on the basis of race, creed, sex, sexual orientation, or national or ethnic origin in any of its school administered policies or programs. Contributions to The Farm School are tax-deductible and can be made online at www.farmschool.org, or by sending your gift to the address below.*



488 MOORE HILL ROAD
ATHOL, MA 01331
978.249.2656
www.farmschool.org



NEWSLETTER, FALL 2008

connecting

people

to the land

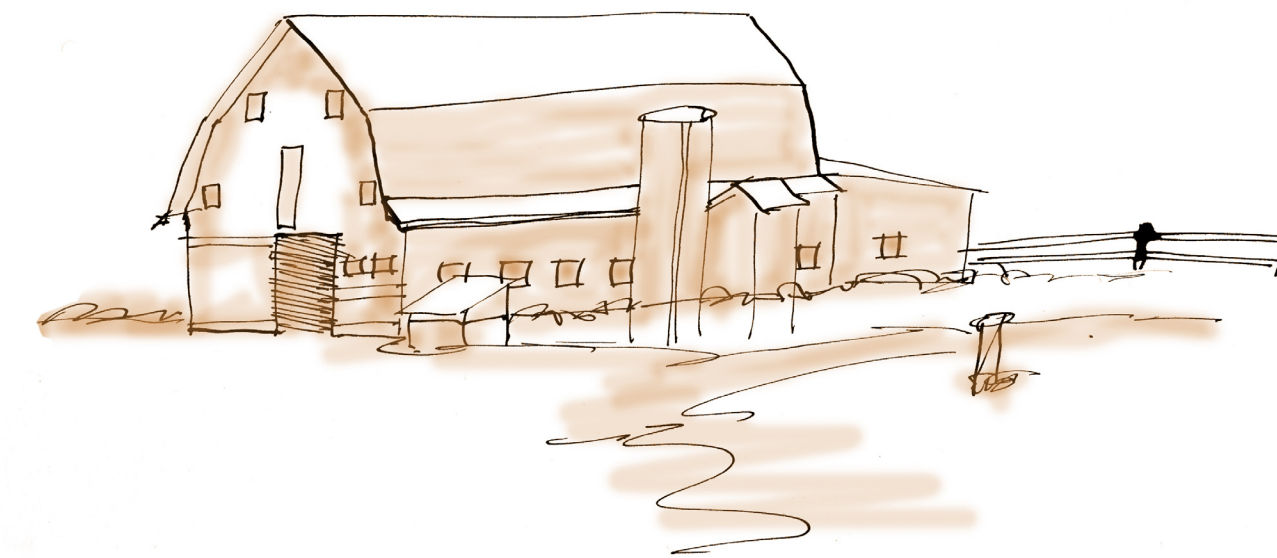
TIME FLIES!

A LOOK BACK AT THE FIRST 20 YEARS

1934 Maggie is born.

1942 Thanks to a loan from the local vet who wants to encourage farming in the area, Julius moves onto the Sentinel Elm Farm with Alice, his seventeen-year-old bride, buys his first cow and cools her milk in the spring down at the corner of the road.

1962 Ben's first summer in Ohio on his uncles' farm.



1988 Ben, an apprentice teacher at Shady Hill School, sees the gift of useful work and practical knowledge that his uncles had given him missing from the lives of the children he is teaching, and begins talking with family and friends; Scott Hill begins to shepherd the incorporation of the school as a non-profit.

1989 July, The Farm School determined by the IRS to be a non-profit, *official start*; first Farm School Board of Directors Meeting, at which visiting school program is imagined as very much what exists today, a program for many children from diverse backgrounds that is 100% farming; Marianna Davenport, Sally Holmes and Grateful Dead's Rex Foundation start their long-term support. **Annual budget: \$20,000**

1990 Ben hired part-time as Director; potential sending schools polled, 6 say build it and they will come; Ben explores every farming community within an hour-and-a-half, looking for that magic feeling; Shady Hill School Head Jonathan Slater hosts first fund-raiser at his house, everyone invited contributes (including Elizabeth Thomson and the Hunt Foundations). **Donations: \$35,000**

1991 John Woolsey takes Ben to visit a farm in John's beloved region of the state, above the Quabbin Reservoir, and it's the one: within a week, Ben shakes hands with the always smiling Julius Gordon to begin a long-term lease of the Sentinel Elm Farm in Athol, Massachusetts; Ben spends nights sleeping in the barn, bringing in the first hay crop; in the Fall, Ben, Wendy and a one-year-old Eliza move into the little farmhouse and one week later, the first group, Wendy's class, which includes future staff member Chuck Weed, comes from Shady Hill School to camp in the fields and do the work that needs to be done: roll up old barbed wire, beat back the brush, paint the barn; Ben Utter hired as first staff member, hippie bus arrives for him to live in. Todd Nelson becomes Board Chair. **Number of annual donors: 20**

1992 After a more elaborate, and expensive-to-build, the bunk house, simple and to-the-point, as a



design is proposed, Chuck Weesner designs gift to the school; Ben and Ben borrow a horse trailer, and a truck, and head out to Ohio to pick up our first two cows, Clara and Althea, from Uncle Perry; Gary Smith walks to the top of the hill with Ben on a summer evening after chores and they imagine the bunk house being built, Gary making a contribution to get the construction started, right away; the Edward Moore Foundation begins its long-term support; lumber for the bunkhouse is sustainably harvested from a forest on a

neighboring farm; students help with construction, sleep in tents on the ridge, milk the cows and feed the pigs; Travis Anderson begins his unbroken chain of support; Eliza plays in a playpen of bales while Ben milks evenings; *to be kind* introduced as the community standard. **Cumulative number of students served: 75**

1993 Bunkhouse completed with a major gift in honor of Marianna Davenport and a loan from Bob Weir's Furthur Foundation that necessitates our first business plan; first staff assembles: Will Anderson to put up fences and care for the livestock, Josh Buell to cook and raise our spirits, Doug Smith to imagine and herald the kids coming, Carlen Rigrod to seed the first garden, 60'x100', "big enough to start"; Carlen suggests we develop a schedule for the first program, and the daily work schedule we still live by today is born; Sally outfits the kitchen with everything from spatulas to plates; Ben, Doug and Josh liberate 40 mattresses from a long-deserted nunnery, borrowed trucks piled high; Josh takes a one-day course in new games, and we have our program director-in-the-making; first official program in the bunk house, the Gordon School, and it is *magic*; early groups do chores, hang swing in the pasture, lay out and build woods trail that meanders through each tree stand for forest stewardship, including a bridge at the bottom of the ridge built by the Fenway Middle College High School students; Clara has twins; first farrowing, Louella producing 12 piglets.



1994 First Apprentice, Molly Schmitt, bravely joins the team after graduating from college and lives with Doug and Josh in the unfinished top stories of the bunk house; brand new John Deere bucket tractor purchased; our first Jersey cow joins the girls as the herd grows; the milk truck climbs the drive every other day to pick up our milk, now cooled in a bulk tank in the barn; 9 consecutive weeks with a program in the fall, stone walls pulled back up, movable calf structure built; neighbors, friends and fellow farmers Karen and Dave Davis begin their vital support; now established as a school-year program, we offer our first summer camp for one week; The Fenway Middle College girls group joins Doug singing at the campfire with such enthusiasm that the police arrive; we selectively cut pines west of the flat field readying them for the sawyer; the dripping wet lumber is ferried into the woods where the children's voices and the ring of hammers sing in the trees as our first cabin is constructed; universal health care established for all employees. **Annual budget: \$175,000**

1995 Mac arrives, lies down in the pasture the first night on the farm, legs straight out, and Ben thinks he's dead; rotational grazing begun on pastures; Josh's cousin Obie stops by for the first time, helping the students work on the cabin; Doug babysits Eliza while Perry is entering the world; Kohlberg Foundation makes first major gift, for operations; first programs for Driscoll School, 2nd, 5th and 8th grades. **Cumulative number of students served: 900**

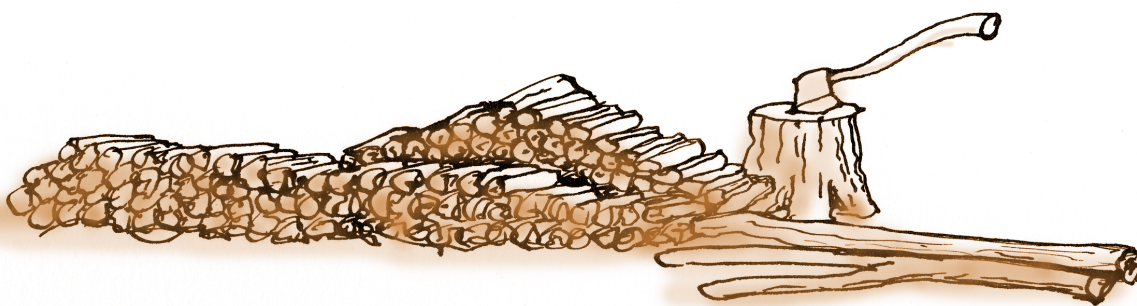
1996 Jonathan Bush assembles a group of his fellow Harvard Business School students to map a plan for the school – tell us to fill those beds full as many nights as we can! Mission Hill School joins, sending every student over several programs. While deep in the woods on a night hike a student from the city asks, "Do you know this neighborhood? I mean is this a good neighborhood?" "Oh yes," Josh replies, "I know this neighborhood, and its a good one." **Donations: \$160,000 Tuition/farm revenue: \$83,000 Number of CSA members: 12**

1997 Kate and Erik arrive to join the staff; sap boils away in the old stainless steel sink, drain plugs welded over, atop a stone fireplace that Josh built with students in no time; on the drive home from camp, Charlotte Sullivan declares, "I never want to watch TV again!" Later that summer, she plants a small vegetable garden in the front lawn and make a compost bin. Eleven years and many adventures after that, she joins the Farm School staff.

1998 Tori Davis visits the farm on a foggy morning, walks down the lane with Ben and gets it immediately, and completely, and soon after the Shelby Cullom Davis Foundation begins its life-giving support; the makeshift sugar shack feels more like a sugar ship - the wind tears at the tarp overhead, the kids and Kate stand in a giant puddle, yet still the sap boils; more schools come, beds are getting filled!

1999 Shandor joins Ben in managing the growing enterprise; First CampOut week-long summer session for children from gay and lesbian families; students, teachers, farmers, friends, and the occasional dog wander in and out of the steamy sugar shack, just completed with the help of students, teachers, farmers, friends; draft horse Mac, farmer/teachers and Board members join together to pick stones from the recently tilled north field and sled them to a wall that has been added to in this way for hundreds of years; Farm Manager house is built by one and all. **Cumulative number of students served: 4,200**

2000 George Travis leads us through our first Farm School Concert featuring founding Board Member Bob Weir and Board Chair Todd Nelson's sister Jonatha Brooke along with their friends Bruce Cockburn, Patty Larkin, Chris Smither and Rob Wasserman playing in the round, together; Jim Pallotta provides critical support to the event, as he will again and



again; Board meeting at Peter's house envisions a Farm School Institute that includes sharing our lessons learned with other programs and creating a new program for adult training; Maggie asks Ben, "How did Julius and Alice get so lucky to have you caring for their farm?" and invites us to be her guests starting the adult program on her farm. **Donations: \$350,000 Tuition/farm revenue: \$150,000**

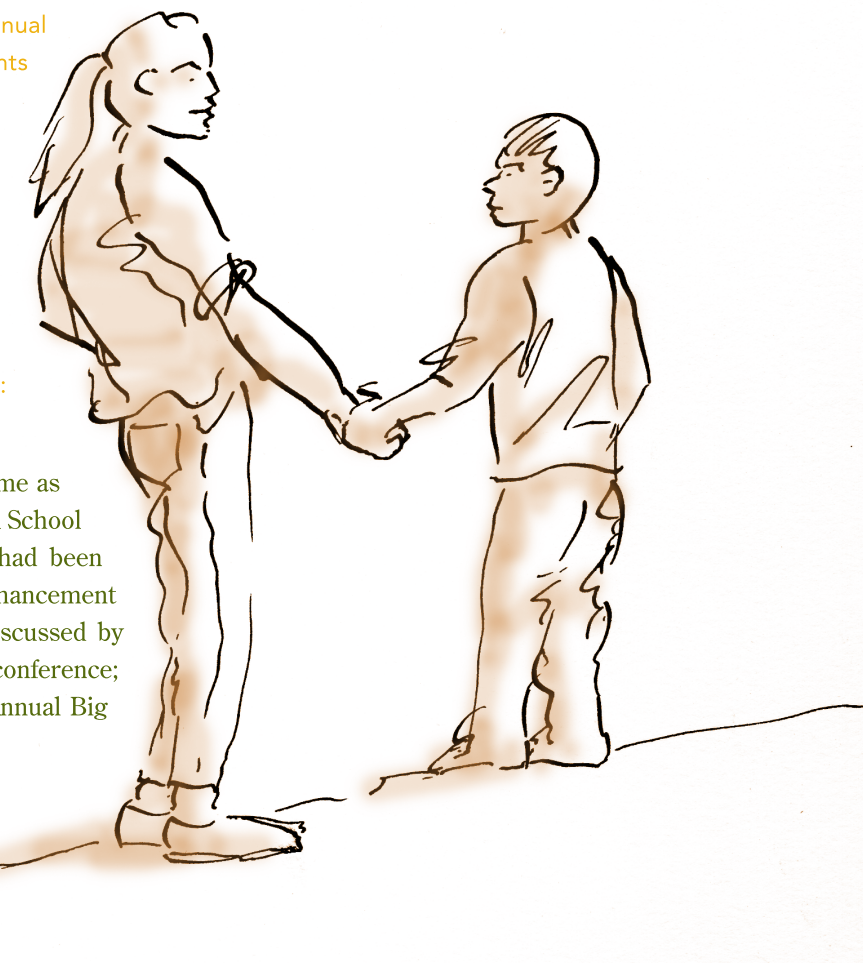
2001 On September 11, the group visiting stays on, "this is the best place for children to be today"; Mission Hill School echoes The Farm School in their new motto, *work hard, be kind*; Visiting School Program staff imagines having students on the farm full-time and turns the 3 story chicken coop that Maggie's father Roy built into a two-story classroom space for a one-room middle school; Willie Nelson rocks the 2nd Farm School concert, and says, "We need more places like this"; Shandi and Carlen visit Norway to see a model Farmer Training program in action; Todd passes the Board Chair torch to Peter Agoos with Nora Huvelle.

2002 Sentinel Elm Farm initial purchase made possible by an Agricultural Protection Restriction and a low-interest loan made possible by Dick Bergmann; Cedar Tree Foundation begins its partnership in the creation of the Practical Farm Training Program at Maggie's Farm, along with support from the Wendling Foundation and the Robbins de Beaumont Foundation; Obie and Will return to work with Carlen to pioneer a staff at Maggie's; first group of student farmers (4, including future Farm Manager Bradley!) come to Maggie's, sleep in canvas tents in the fields and, with Chris, open and plant the fields with row crops and market the voluminous result at Copley Square Market; the first class of 4 students in the Chicken Coop includes Eliza.

2003 Patch comes for a season as a student farmer at Maggie's; Kohlberg Foundation enables the renovation of Maggie's Farmhouse to 10 room dorm; vegetable sales reach \$100K; in an act of extraordinary generosity, Chef Peter Davis of Henrietta's Table offers to host our annual benefit, assuring the continuation of both the concert series and the school itself, and the Big Pig Gig is born; student farmers devour pints of ice cream at close to 11 pm, minutes after packing the last bag of mesclun mix harvested that morning from newly turned fields at Maggies Farm. **Annual budget: \$800,000 Cumulative number of students served: 9,700**

2004 Board, family and friends plant a spiral-shaped apple orchard at Maggie's in honor of beloved board member Amy Waldman; the Barr Foundation inspires and funds a year-long evaluation examining the relationship between The Farm School and the Mission Hill School. **Annual budget: \$1,050,000 Donations: \$600,000 Tuition/farm income: \$450,000**

2005 First 8th grade class comes from MHS that came as Kindergarteners; the Mission Hill School/Farm School evaluation documents wonderful effects that had been taken on faith along with providing ideas for enhancement and is published, *The Lay of the Land*, and discussed by the entire staffs of both schools at a day-long conference; Bobby Weir brings his band to play the 3rd Annual Big Pig Gig



MEETING, PLANNING WRITING, SEARCHING, BUILDING, EXPERIMENTING, BELIEVING, EVALUATING, SUSTAINING,